



WELCOME 11TH GRADE PARENTS

COLLEGE & CAREER CENTER RESOURCES & COLLEGE PLANNING

JULIE PRINCE – COLLEGE & CAREER CENTER

- College-Related Questions – 4 year & 2 year
- College Planning Resources
- Naviance
- Scholarships/Financial Aid
- Enrichment Ideas
- Test Prep and Tutoring Resources
- And more...

RESOURCES

- *Drop-In Hours for Students* – Virtual join links on CCC Homepage [DROP IN HOURS](#)
- *Individual Appointments* (15 minutes) – email jprince@opusd.org
- *e-Newsletter* – Emailed to Students & Parents - Friday evening [NEWS AND EVENTS](#)
- *Naviance* – Assessments & Course Planning
- *Balancing Your College List* - [PowerPoint Presentation](#)
- *College & Career Center Webpage* – Updates Coming 2021...

NAVIANCE

Comprehensive college and career readiness platform

- **Course Planning**
- **Assessments**
- **Explore Careers** (Mrs. Friedman)
- **Explore Colleges**
- **Apply to College**




NAVIANCE — COURSE PLANNING

STEP 1 Choose Plan — **STEP 2** Create New — **STEP 3** Add Courses

Select the graduation plan you would like to build.

Start by selecting a high school and then select one of the graduation plans available at that school. You will then be able to select courses and explore and apply career pathways courses to your plan. You can also create more than one plan so that you can explore different pathways available at different schools.

Select Your School

Oak Park High School 

Oak Park High School Graduation Plans

NCAA Eligibility

Division 1 schools require you to meet academic standards fo...
[show more](#)

SELECT THIS PLAN

OPHS (230 credits) Graduation Requi...

Beginning with the class of 2021 and beyond, the following a...
[show more](#)

SELECT THIS PLAN

UC/CSU (a-g) Requirements

To satisfy the UC & CSU system's admission
[show more](#)

SELECT THIS PLAN

Additional Resources

Postsecondary Plan

4yr degree

Your Assessments

Career Cluster Finder


Your Top Clusters

- Science, Technology, Engineering and Mathematics
- Agriculture, Food and Natural Resources
- Law, Public Safety, Corrections and Security

Favorite Career Clusters

CLUSTER

- Business Management and Administration

 Show Me

NAVIANCE - GRADUATION REQUIREMENTS

- Courses
- Manage Course Plan
- Click (+)
- Add Courses

OPHS (230 credits) Graduation Requirements Plan i

(Draft Plan)

Status: IN PROGRESS

Credits Required

230

Credits In Plan

40

Credits Still Needed

190

Add / Edit Courses in Your Plan

Add courses in order to submit, scan, or print this plan.

[Make this my current plan](#)

Plan: OPHS (230 credits) Graduation Requirements Plan

REQUIREMENTS	9th Grade	10th Grade	11th Grade	12th Grade
<p style="font-size: 0.8em; margin: 0;">40 Credits in Plan</p> <p style="font-size: 0.8em; margin: 0;">English</p> <p style="font-size: 0.7em; margin: 0;">40 Credits</p> <p style="font-size: 0.7em; margin: 0;">40 Credits in Plan</p> <p style="font-size: 0.7em; margin: 0;">+ edit courses</p>	<p style="font-size: 0.8em; margin: 0;">10 Credits</p> <p style="font-size: 0.7em; margin: 0;">English I (CP) - 10 credits</p>	<p style="font-size: 0.8em; margin: 0;">10 Credits</p> <p style="font-size: 0.7em; margin: 0;">English II (H) - 10 credits</p>	<p style="font-size: 0.8em; margin: 0;">10 Credits</p> <p style="font-size: 0.7em; margin: 0;">English III (H) - 10 credits</p>	<p style="font-size: 0.8em; margin: 0;">10 Credits</p> <p style="font-size: 0.7em; margin: 0;">AP English IV Literature & Composition - 10 credits</p>
<p style="font-size: 0.8em; margin: 0;">General Electives</p> <p style="font-size: 0.7em; margin: 0;">60 Credits</p> <p style="font-size: 0.7em; margin: 0;">0 Credits in Plan</p>				

Additional Resources

Postsecondary Plan

4yr degree

Your Assessments

Career Cluster Finder

Your Top Clusters

- 🔬 Science, Technology, Engineering and Mathematics
- 🌱 Agriculture, Food and Natural Resources

NAVIANCE – A-G REQUIREMENTS

ROLL GRADUATION REQUIREMENTS INTO A-G REQUIREMENT PLAN

← Back Create New Course Plan

✓ **STEP 1** Choose Plan — **STEP 2** Create New — **STEP 3** Add Courses

You selected:
UC/CSU (a-g) Requirements [Change](#)

How would you like to create this course plan?

Create a New Plan

Copy Courses from Existing Plan

OPHS (230 credits) Graduation Requirements Plan [Change](#)
Draft Plan

When you click **CONTINUE** the course selections you made in "OPHS (230 credits) Graduation Requirements Plan Draft Plan" will be transferred in the best way possible to a new "UC/CSU (a-g) Requirements" plan of study. Due to differences in requirements between plans of study there may need to be some course adjustments in the new plan.

CONTINUE

Additional Resources

Postsecondary Plan

4yr degree

Your Assessments

Career Cluster Finder

Your Top Clusters

- Science, Technology, Engineering and Mathematics
- Agriculture, Food and Natural Resources
- Law, Public Safety, Corrections and Security

Favorite Career Clusters

CLUSTER

A-G REQUIREMENTS

- The A-G / College Entrance Requirements are a sequence of high school courses that students must complete (with a grade of C or better) to be minimally eligible for admission to the University of California (UC) and California State University (CSU). They represent the basic level of academic preparation that high school students should achieve to undertake university work.

A-G REQUIRED COURSES

- **A. History/Social Science** - 2+ years including 1 of World, 1 of U.S. and/or Government
- **B. English** - 4 years of college preparatory English
- **C. Mathematics** - 3+ years of including topics covered in basic and advanced algebra and two- and three-dimensional geometry
- **D. Laboratory Science** - 2+ years of laboratory science in at least 2 of the 3 disciplines of biology, chemistry and physics
- **E. Language Other than English** - 2+ years of the same language (other than English)
- **F. Visual/Performing Arts** - 1+ years of dance, music, or visual arts.
- **G. College Preparatory Elective** - 1+ years (additional year of any requirement above or other elective)

NAVIANCE – ASSESSMENTS –

11TH GRADE NAVIANCE WEBINARS – WATCH SPRING OF 2021

The screenshot shows the Naviance Student interface. At the top left, the logo reads "Naviance | Student". The top navigation bar includes links for Home, Courses ^{New}, Colleges, Careers, About Me, and My Planner. A welcome message "Welcome, Julie!" is displayed. Below it is a search bar with the placeholder text "Search for Colleges" and a dropdown arrow, followed by a search input field with the placeholder "Type a college name". A search button with the text "SEARCH" is partially visible. A dropdown menu is open, showing three categories: "COLLEGES Home" (with a house icon), "COLLEGES I'm thinking about" (with a heart icon), and "COLLEGES I'm applying to" (with a graduation cap icon). Below the search bar, there are two main content areas. The left area is titled "The Junior Year" and features a yellow diamond-shaped graphic with the text "COLLEGE BOUND" and two arrows pointing in opposite directions. Below the graphic, the text reads: "Juniors are faced with their most intense academic experience in high school and need to be mentally and". The right area is titled "My Favorites" and lists four items: "COLLEGES I'm thinking about" (heart icon), "COLLEGES I'm applying to" (graduation cap icon), "COLLEGES I'm thinking about" (heart icon), and "COURSES I'm thinking about" (heart icon). Each item has a right-pointing arrow. In the bottom right corner, there is a "Show Me How" button with a question mark icon.

UNIVERSITY OF CALIFORNIA (UC)

- Requirements to be Eligible for Admission:
 - A-G subject requirements (C or better)
 - Minimum 3.0 GPA
 - SAT/ACT – Test-Optional
 - Answer 4 out of 8 Personal Insight Questions (PIQs)
 - No Letters of Recommendation (LOR) required
 - <https://admission.universityofcalifornia.edu/>
 - Application Opens: August 1st Deadline: November 30th

CALIFORNIA STATE UNIVERSITY (CSU)

- Requirements to be Eligible for Admission:
 - A-G subject requirements
 - Minimum 2.0 GPA
 - SAT/ACT – Test-Optional
 - No Essays
 - No Extracurriculars required
 - No Letters of Recommendation (LOR) required
 - <https://www2.calstate.edu/apply>
 - Application Opens: October 1st Deadline: November 30th

PRIVATE AND OUT-OF-STATE

Common App – www.commonapp.org/ Coalition App - <https://www.coalitionforcollegeaccess.org/>

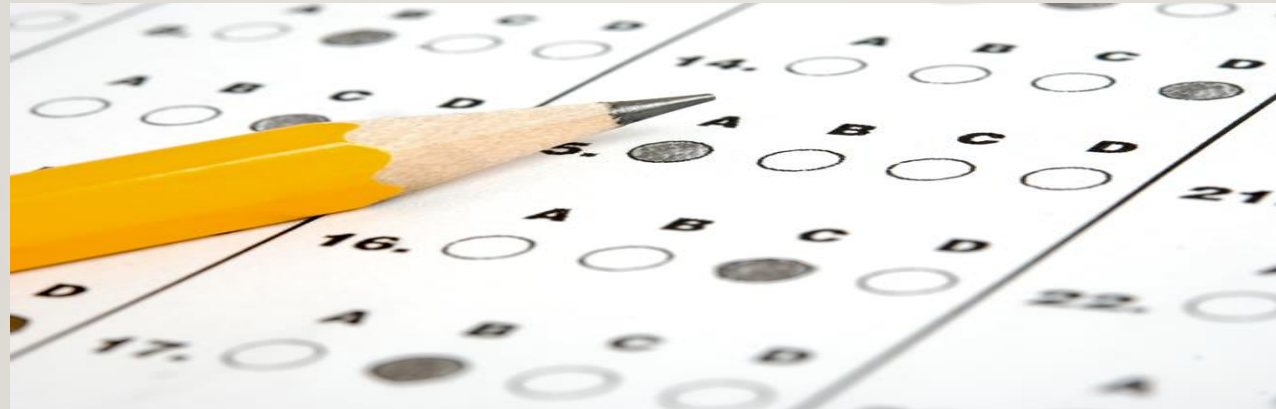
- Deadlines Vary
- Transcripts Sent through Naviance
- Letters of Recommendation – Usually required (check each colleges requirements)
- Varying Application Types – ED, EDII, EA, REA, RD, Priority, Rolling

COMMUNITY COLLEGES

- Moorpark College - <https://www.moorparkcollege.edu/>
 - Pierce College - <http://www.piercecollege.edu/>
 - Santa Barbara City - <https://www.sbcc.edu/>
 - Santa Monica College - <https://www.smc.edu/>
-
- Moorpark Preview Days – Field Trip to Moorpark (TBD for Feb 2021), campus tour and counselor assistance in selecting courses.
 - No minimum gpa for Community Colleges
 - Low cost and may be Free
 - Low or no cost to apply

SAT & ACT TESTS

- Test-Optional is very fluid right now
- Check college/university website for policy for Fall 2022 applications
- If centers open locally in Spring of 2021 – Register for tests



ADDITIONAL RESOURCES

- **Friday, September 18th - 10:30-11:30am - *How College Decisions are Made***

Join a panel of 4 colleges and universities who will help explain how colleges make their decisions from thousands of applicants. [CLICK HERE TO REGISTER](#)

- Ongoing College Rep Visits - [Check College Visits](#)
- College Information Sheet - [CLICK HERE](#)

11TH GRADE PLANNING

- Take every class seriously – Every Grade Counts!
- Increase your class rigor – take challenging courses within your ability through 12th Grade
- Continue with school club or outside organization participation
- Seek leadership roles in your area of interest (rocketry, environment, music, art, activism, student government, computers, cultural, medical, animals, teaching...)
- Continue with “meaningful” volunteer/community service
- Increase your class participation – Get to know your teachers!
- Start researching colleges of interest – Attend College Rep Visits and College Fairs
- 11th Grade College Planning Checklist – College Board Resource

A framed chalkboard with the text "Any Questions?" written in white chalk. The chalkboard is black with a white border and a black frame. The text is written in a cursive, handwritten style. The word "Any" is on the top line, and "Questions?" is on the bottom line. The background of the chalkboard shows some faint, dark smudges and lines, suggesting it has been used before.

Any
Questions?

-
- **Post questions in the chat**
 - **Student specific questions, please email me:**
jprince@opusd.org