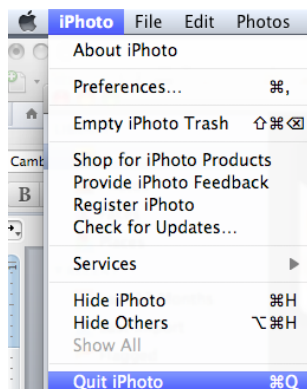


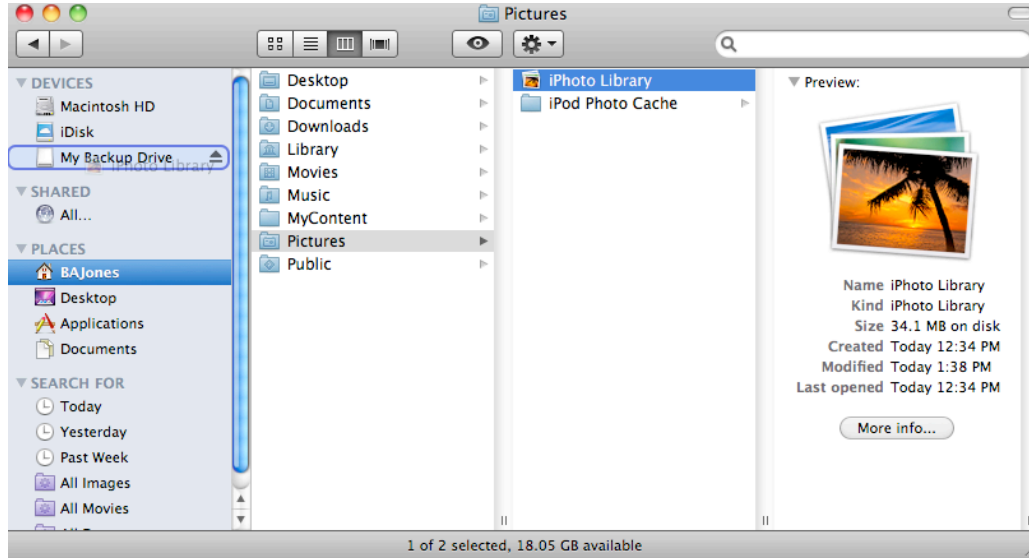
How to Save Your iPhoto Library to an External Hard Drive

1. Quit iPhoto

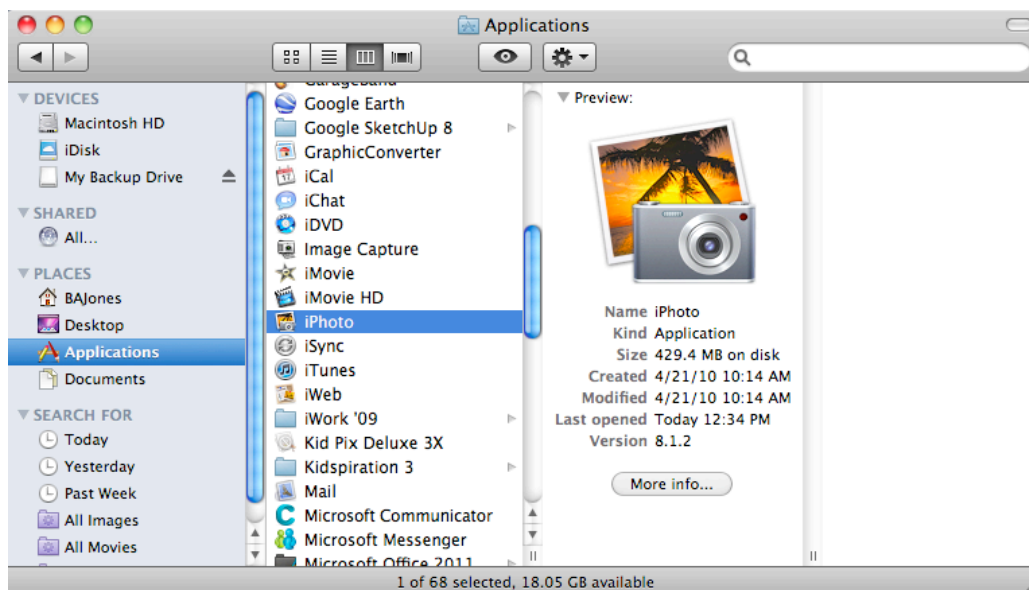


2. Open your Pictures folder in your home folder

3. Drag "iPhoto Library" to your external drive



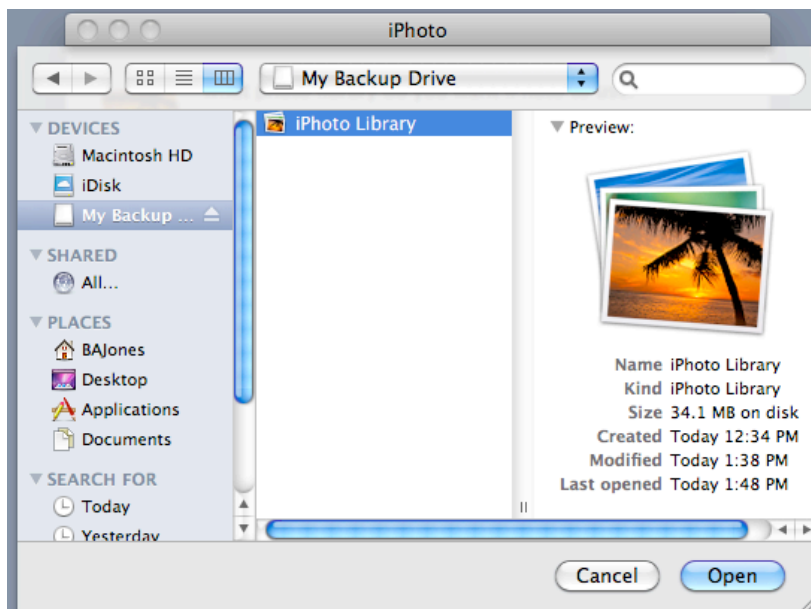
4. Open iPhoto while holding the "option" key



5. Click “Other Library”



6. Navigate to your external drive and select “iPhoto Library”



7. Verify iPhoto opens without any issues

8. Go back to Pictures folder in your home folder

9. Trash “iPhoto Library”

Things to Remember

1. Any time you want to use iPhoto now, you must have the external drive plugged in to the computer
2. This does not count as a “backup” of your photos since the original was deleted. Data is considered backed up if it exists in more than one location